



Kintyre Cold Harbour, London, E14 9NL

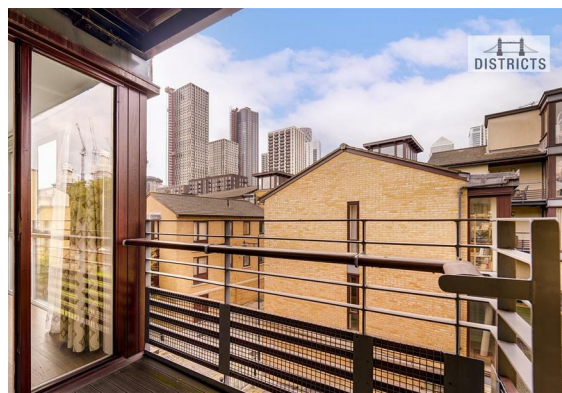
£2,513 Per month

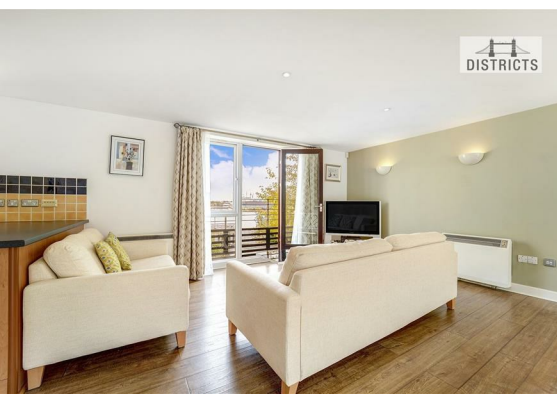
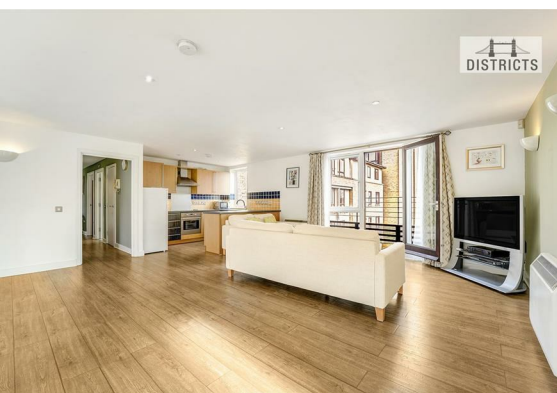
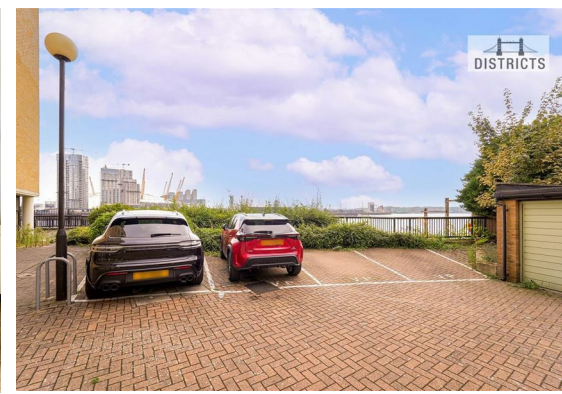


Large and spacious two-bedroom apartment is now available to rent. This bright apartment further benefits from its own private terrace and parking. The property comprises an open plan reception with modern integrated kitchen, two spacious double bedrooms and two luxury bathrooms. Located just a few moments from the heart of London's fastest growing business district, Kintyre House is well connected with a 7 minute stroll to Canary Wharf enjoying easy access to the Jubilee Line and access to central London within minutes using the new Crossrail service (Elizabeth Line). The property is on the second floor with stair access, offered furnished with parking and available now. The bedrooms have been digitally dressed for marketing purposes.

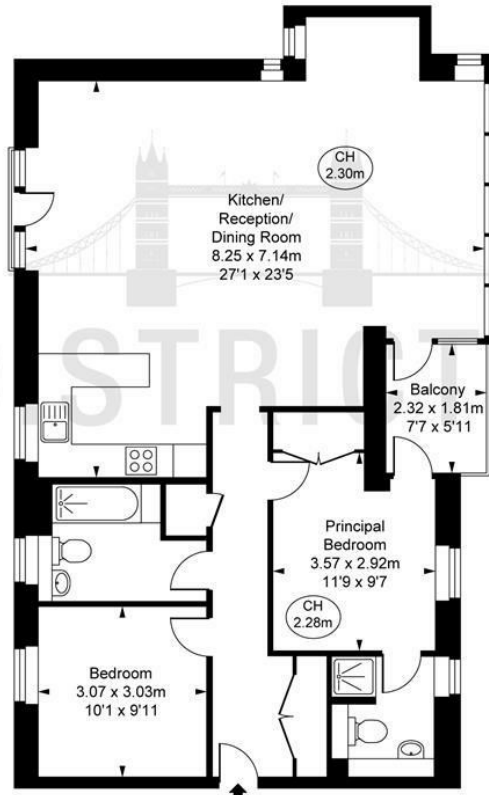
Electricity supply – Mains | Heating – Electric | Water supply – Mains | Sewerage – Mains

Council Tax Band: Tower Hamlets, F
Minimum contract: 12 months
Change of contract fee: £50 including VAT
Holding Deposit - £580 (1 weeks rent, subject to agreed offer)






Kintyre House,
Cold Harbour London, E14
Approximate Gross Internal Area
93.31 sq m / 1,004 sq ft
(CH = Ceiling Heights)



Second Floor

This plan is not to scale. It is for guidance and not for valuation purposes.
All measurements and areas are approximate only, and have been prepared in accordance with the current edition of the RICS Code of Measuring Practice.
© Fulham Performance

Energy Efficiency Rating		Current	Potential
Very energy efficient - lower running costs			
(92 plus) A			
(81-91) B			
(69-80) C			
(55-68) D		68	68
(39-54) E			
(21-38) F			
(1-20) G			
Not energy efficient - higher running costs			
England & Wales		EU Directive 2002/91/EC 	

These particulars, whilst believed to be accurate are set out as a general outline only for guidance and do not constitute any part of an offer or contract. Intending purchasers should not rely on them as statements of representation of fact, but must satisfy themselves by inspection or otherwise as to their accuracy. No person in this firm's employment has the authority to make or give any representation or warranty in respect of the property.